

Reclaim Investment Dollars with MeltDown™

Crop residue can be considered a nuisance, from increased fertilizer use to tire damage and fuel consumption, undigested crop residue can add up your investment dollars. With the use of MeltDown™, you can recycle your nutrition and turn crop residue into a valuable resource for next years crop.



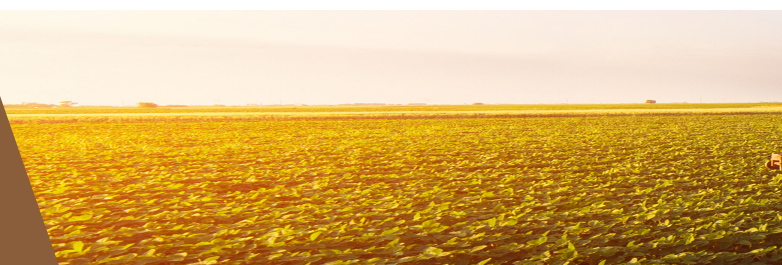
Application Rate

Broadcast Application: 1 L (34 oz) per acre
MeltDown™ can be added to fall or spring burndown and/or added to your nitrogen program. Fall applications support improved spring planting conditions.



Recover Applied Nutrients

MeltDown™ provides beneficial cellulose and lignin-degrading microbes that increase the release of organic matter and enhance water retention. MeltDown™ breaks down the waxy layer, boring into cellulose and allowing water, air, and other microbes to enter. This softens residue but leaves some surface fodder to help resist erosion. Nutrients contained inside the stalks are also released, replenishing the soil for the next growing season and providing a return on investment of already applied fertilizer.



Positive MeltDown™ Trial Results

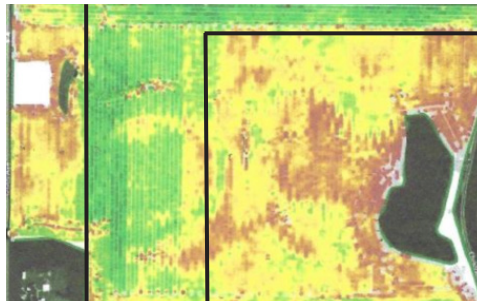
MeltDown™ Nutrient Release

Half of the lawn was treated with MeltDown™ to break down tied up nutrients (thatch). The MeltDown™ treated section allowed air, water, and the released nutrients to reach the roots, which leads to a healthier lawn. MeltDown™ can be applied to sod, hay ground, or cover crop termination to provide similar benefits.



Corn to Bean MeltDown™ Stubble Digester Trial: Minnesota

MeltDown™ was applied to the corn crop residue in the fall and the data is from the soybean crop the following year. This trial resulted in a 7 bushel/acre increase when treated with MeltDown™.

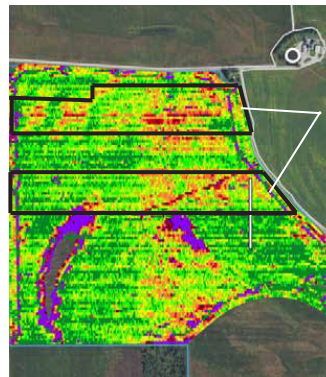


Bushels/acre Map Legend

| | |
|--|---------------|
| | > 70 bu/ac |
| | 67 - 70 bu/ac |
| | 64 - 67 bu/ac |
| | 61 - 64 bu/ac |
| | 58 - 61 bu/ac |
| | 54 - 58 bu/ac |
| | 51 - 54 bu/ac |
| | 48 - 51 bu/ac |
| | 45 - 48 bu/ac |
| | < 45 bu/ac |

Corn to Bean MeltDown™ Stubble Digester Trial: Jackson, Nebraska

MeltDown™ was applied to the soybean crop with pre-emergence herbicide (last season corn crop). This trial resulted in a 4.5 bushel/acre increase when treated with MeltDown™.



Untreated sections

Location:

CanGrow Crop Solutions
3971 Old Walnut Rd.
Alvinston, ON, N0N1A0

Contact Us:

www.cangrow.com
solutions@cangrow.com
519-847-5748

