

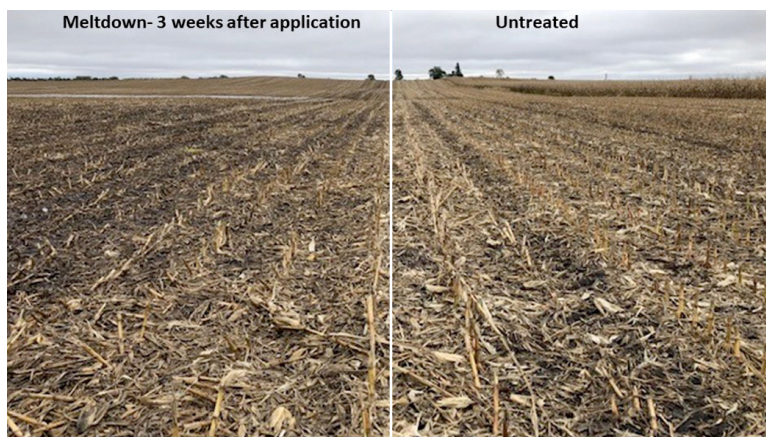
## Reclaim Investment Dollars with CanGrow MeltDown®

Crop residue can be considered a nuisance, from increased fertilizer use to tire damage and fuel consumption, undigested crop residue can add up your investment dollars. With the use of CanGrow MeltDown®, you can recycle your nutrition and turn crop residue into a valuable resource for next years crop.



### Application Rate

Broadcast Application: 1 L (34 oz) per acre  
 CanGrow MeltDown® can be added to fall or spring burndown and/or added to your nitrogen program. Fall applications support improved spring planting conditions.



### Recover Applied Nutrients

CanGrow MeltDown® provides beneficial cellulose and lignin-degrading microbes that increase the release of organic matter and enhance water retention. CanGrow MeltDown® breaks down the waxy layer, boring into cellulose and allowing water, air, and other microbes to enter. This softens residue but leaves some surface fodder to help resist erosion. Nutrients contained inside the stalks are also released, replenishing the soil for the next growing season and providing a return on investment of already applied fertilizer.



#BetterBiology

## Positive CanGrow MeltDown® Trial Results

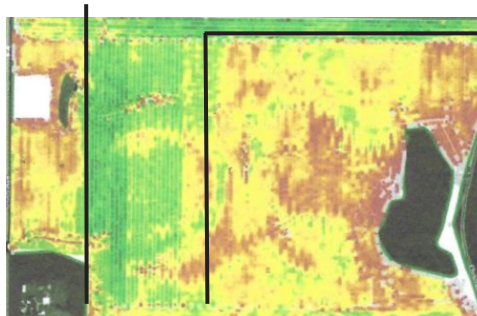
### CanGrow MeltDown® Nutrient Release

Half of the lawn was treated with CanGrow MeltDown® to break down tied up nutrients (thatch). The CanGrow MeltDown® treated section allowed air, water, and the released nutrients to reach the roots, which leads to a healthier lawn. CanGrow MeltDown® can be applied to sod, hay ground, or cover crop termination.



### Corn to Bean CanGrow MeltDown® Stubble Digester Trial: Minnesota

CanGrow MeltDown® was applied to the corn crop residue in the fall and the data is from the soybean crop the following year. This trial resulted in a 7 bushel/acre increase when treated with CanGrow MeltDown®.

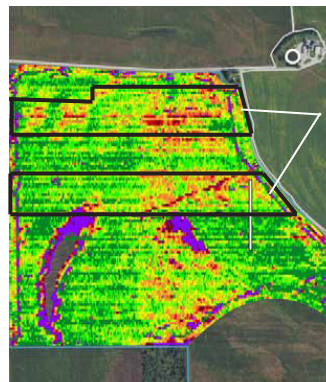


#### Bushels/acre Map Legend

	> 70 bu/ac
	67 - 70 bu/ac
	64 - 67 bu/ac
	61 - 64 bu/ac
	58 - 61 bu/ac
	54 - 58 bu/ac
	51 - 54 bu/ac
	48 - 51 bu/ac
	45 - 48 bu/ac
	< 45 bu/ac

### Corn to Bean CanGrow MeltDown® Stubble Digester Trial: Jackson, Nebraska

CanGrow MeltDown® was applied to the soybean crop with pre-emergence herbicide (last season corn crop). This trial resulted in a 4.5 bushel/acre increase when treated with CanGrow MeltDown®.



Untreated sections

#BetterBiology